

DESIGN NEWS:

PHOTOGRAPHER MARIO TESTINO LIVES THE BONDI DREAM

Quinn Connors

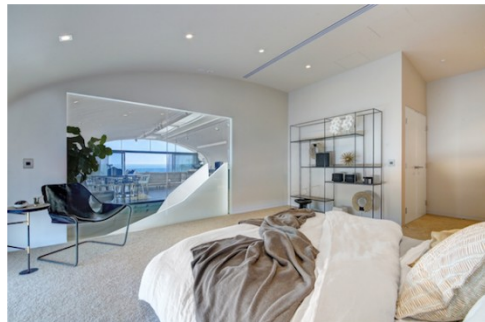
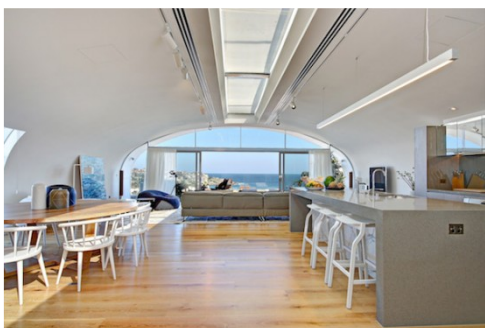
Published February 2nd 2016



If you were a world-renowned photographer with an extremely prolific career visiting **Sydney** to shoot an exclusive *Vogue Australia* issue, where would you stay? Well, if you were as prominent as photographer **Mario Testino** – with decades of work under your belt and a portfolio that features some of the biggest and best brands, magazines and most famous faces worldwide – you wouldn't even need to ask the question. *Vogue Australia* would have you covered, setting you up in one of the newest, most covetable properties in our fair city. Which is exactly what happened when the Peruvian photographer ventured down under to shoot the magazine's special April issue. Not only invited by the publication to experience our beautiful land, **Mario Testino** was also put up in the new **PACIFIC Bondi Beach Lighthouse** penthouse – two stories and 457 m² of gorgeous surrounds overlooking the iconic shores.

Flashback: **Mario Testino's Retrospective Exhibition in Paris**

Nestled in the famous **Bondi** strip, **PACIFIC Bondi Beach** is a Sydney experience most Sydneysiders dream of having, and one that most visitors should enjoy. This particular penthouse where Testino stayed is exceptionally impressive, with beautiful furnishings and styling by **Hub Furniture** and **SJB interiors**, respectively. The stunning abode with ocean views is the embodiment of Bondi chic, and bestows unmatched beach living through what director of SJB Interiors Jonathan Richards describes as 'playful styling' and 'natural light tones'.



Mario Testino must have felt **right at home** in the sculptural white spaces and rooms bathed in light. It's almost too easy to imagine a tribe of **'Towel Series'** models lounging about the 165m² terrace, complementing the airy penthouse's white and sandy tones washed in blue from its environs.

See Also: **The Latest Edition to the 'Towel Series', Derek Zoolander**

The Lighthouse penthouse – Lighthouse 511 to be exact – is part of the recently completed **PACIFIC Bondi Beach** residential, hotel and retail development set in the heart of Campbell Parade towards North Bondi. Dubbed the 'new Bondi hotspot', the development also houses the latest instalment of the **QT Hotel series**, the freshly opened QT Bondi. Plus, the area boasts a host of restaurants, bars and shops (with plenty more to come), and sits just opposite the famed Bondi Farmer's Market.



See Also: **24 Hours on the Gold Coast**



Now, just because you're not necessarily an illustrious photographer who happens to be responsible for helping skyrocket **Kate Moss'** career, and the model may not be part of your #squad, but that doesn't mean you can't have your own slice of Bondi paradise. Steven Chen of McGrath Real Estate is available for **enquiries**, and of course, there's always the possibility of a well-worth-it staycation at QT Bondi. How lucky are we, Sydneysiders?

Images supplied